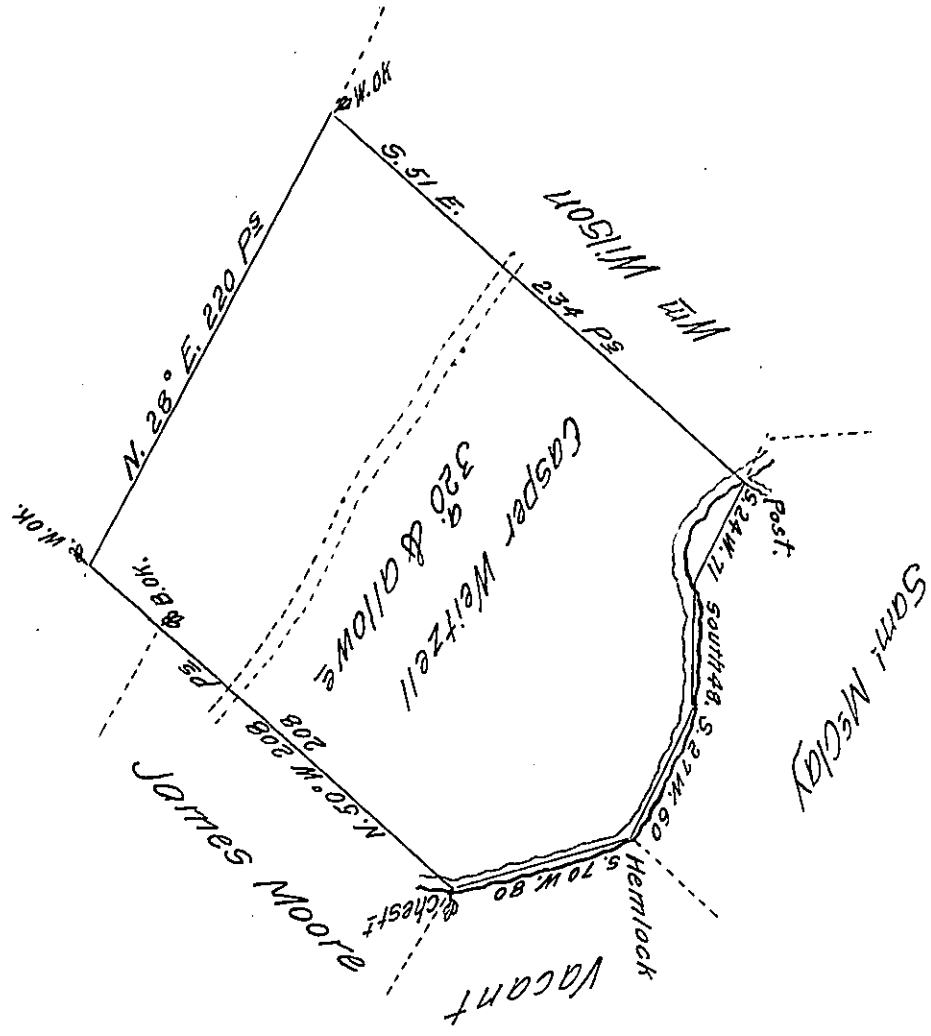


NOW LUZERNE COUNTY



A Draught of a Tract of Land Called ——— Situate on the waters
of Lahawanack adjoining land surveyed for William Wilson & others
in the county of Northumberland containing three hundred & Twenty
Acres besides the usual allowance of Six $\frac{1}{2}$ Cent. for Roads & -^{ta}.
Surveyed the 16th day of November 1774 for Casper Weitzell In
pursuance of a Warrant dated the 9th day of June 1773

To John Lukens Esq^r by Cha^s Stewart Dep^y Surv^r
Survey^r Gen^l.

IN TESTIMONY that the above is a copy of the original remaining on file in
the Department of Internal Affairs of Pennsylvania, made
conformably to an Act of Assembly approved the 16th day of
February, 1833, I have hereunto set my Hand and caused
the Seal of said Department to be affixed at Harrisburg,
this tenth day of March 1908.

Henry Howard
Secretary of Internal Affairs.